

**NOTE: SERVICE ROADS / ROADS OPEN TO VEHICLES**

High-clearance 4X4 vehicles recommended. Parking is permitted on roadside provided driver leaves sufficient space for safe passage of large trucks and equipment. Do not block gates. Do not drive or park over gas lines. Do not block access to gas facilities including, but not limited to, wellheads, valves, pumpjacks, storage tanks, containment structures, and compressor sites.

# POWRR Lands - Dante

## PUBLIC ACCESS AREA SITE MAP

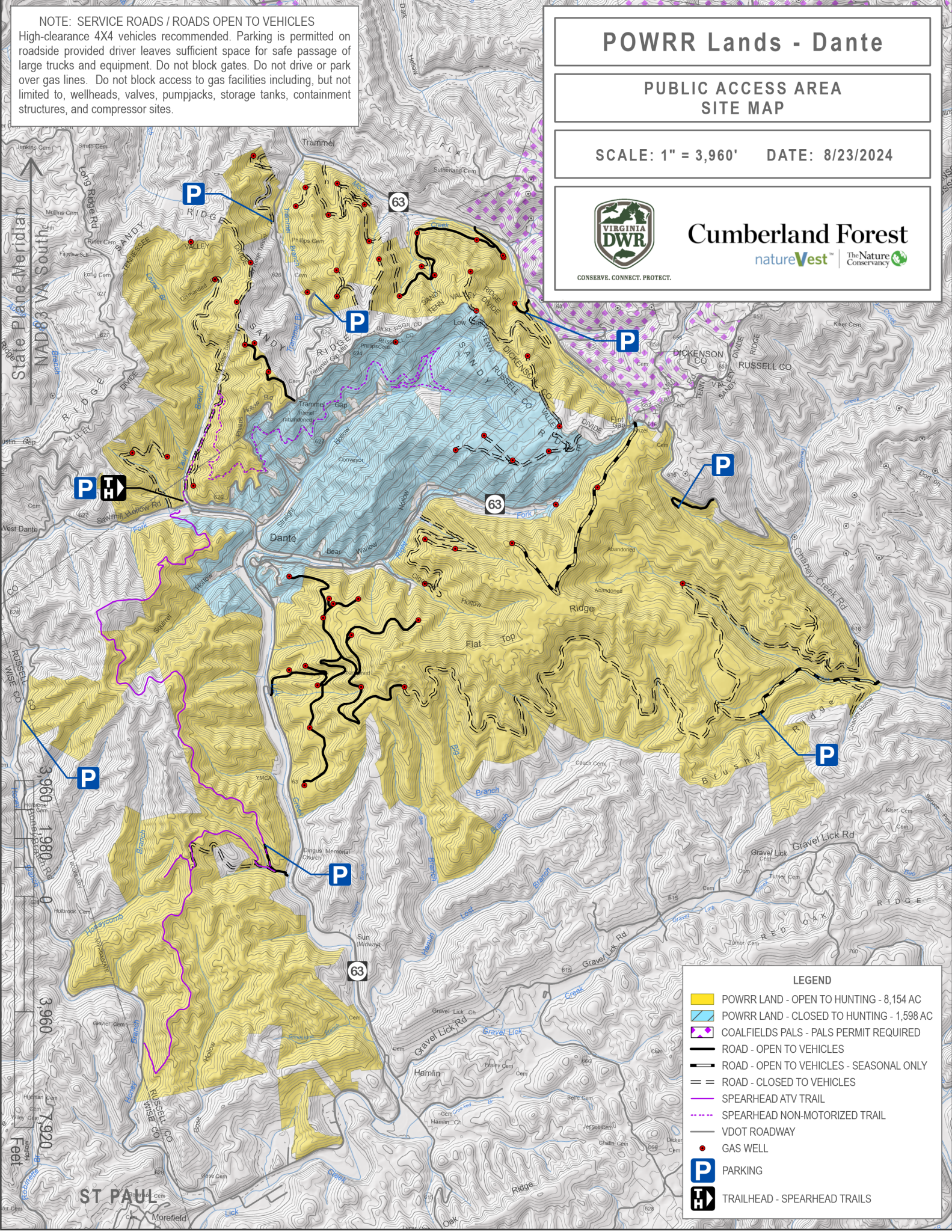
SCALE: 1" = 3,960'    DATE: 8/23/2024



### Cumberland Forest

natureVest™ | The Nature Conservancy

CONSERVE. CONNECT. PROTECT.



#### LEGEND

- POWRR LAND - OPEN TO HUNTING - 8,154 AC
- POWRR LAND - CLOSED TO HUNTING - 1,598 AC
- COALFIELDS PALS - PALS PERMIT REQUIRED
- ROAD - OPEN TO VEHICLES
- ROAD - OPEN TO VEHICLES - SEASONAL ONLY
- ROAD - CLOSED TO VEHICLES
- SPEARHEAD ATV TRAIL
- SPEARHEAD NON-MOTORIZED TRAIL
- VDOT ROADWAY
- GAS WELL
- PARKING
- TRAILHEAD - SPEARHEAD TRAILS

State Plane Meridian  
NAD83 VA South  
3,960'  
1,980'  
0  
1,980'  
3,960'  
Feet